

the anglican parish of eltham research and montmorency
worshipping at St. Margaret's, Eltham

the Parish Matters

This is a monthly bulletin to keep you informed, as well as giving you an insight into the last meeting of Vestry.

Prayer

Faithful God,

Led by you and bound by the cords of compassion,
may we stand straight as we move forward together,
acknowledging the cloud of witnesses before us,
Leaving behind the distractions that hinder us
and persevering with choices that lead
to the fruit of justice and righteousness.

May we, inspired and welcomed by your gracious hospitality,
willingly praise you and heed the call to discipleship
through him who is the source of our new life,
Jesus Christ our Lord.

Libby Delbridge 2007

SALE OF MONTMORENCY SITE

The auction of the Montmorency property took place on 11 August 2007. There were over 200 people in attendance, including about 6 interested bidders. Eventually, the property was sold to interests associated with the Sutherland Homes development. We understand that the purchasers intend to operate a child minding centre, using the St Faith's church building as the centre. We understand that the new owners will also continue the kindergarten. We hope that the new owners are successful in pursuing these aims as the site will be able to maintain, in a broad sense, what have been the features of the site. The selling price was \$1.65million. The monies will be divided between costs, the diocesan funds, mission, and site re-development at Eltham.

Graham Carew

IMPORTANT - VESTRY MOTION

Allocation of monies from sale of land:

“that after the costs have been removed for the Estate Agent and Amalgamation from the sale of St. Faith’s, The Anglican Diocese be given 20% plus 10% for a particular new ministry project, to be decided and approved by the Eltham Vestry.”

A strong motion from Vestry has ensured that as a Parish we are mission focused and outward looking. Before looking or calculating what ‘we need’, Vestry has nominated that we put aside an extra 10% from the sale of Montmorency to go to development of a new ministry/church. One parish has amalgamated so another will now be able to begin.

Sandra Brown-Holt (Warden)

PROPERTY MATTERS

There have been a few things happening around the St Margaret’s site.

- You will have noticed the earthworks to remove the garden mound near the Vestry wall. The soil was used to smooth out some of the bumps in the area between the Memorial Garden and the Pitt Street fence.
- A path has been constructed to lead into the Memorial Garden.
- The St Faith’s shed has been installed at the rear of the churchyard.
- The cracked lintel in the Hall has been repaired.

A contract for the construction of the child-proof fence, which will pass from the vestry corner to Dendy House has been placed and hopefully is now underway.

Disappointingly, of some of the new plants in our gardens have been already been removed.

Graham Carew (Warden)

TYING UP THE LOOSE ENDS!

What an amazing job everybody has done; sorting, placing, selling and generally organizing what to do with all the property and bits and pieces from amalgamating the two sites. Congratulations and Thanks for a job well done. It has included relocating sheds, pedestals, mugs, answering machines, to the linen, challises etc. the list goes on. Well now it’s a bit like we have emptied almost all the boxes but. . . there are still those little things left over to get it completely into shape. ‘Where will we fit those lovely vases that are just too tall for our cupboard’, ‘what’s this box here behind the corner still with some things in it?’ ‘Oh and that other thing over there, were are we going to put that !!!!! ‘ Well before we move onto any new tasks vestry has decided to focus getting our house ‘fully in order’ for the end of the Church year by “tying up the loose ends’ If you can help out with a few little tasks please let a vestry person know. In the meantime please be patient while we get the last things sorted. Again, many thanks to all who have worked so hard to get us to where we are now.

Sandra Brown-Holt

ANOTHER WONDERFUL GIFT.

The Chaplain at Trinity Grammar School has donated their old 2002 ‘state of the art’ data projector from the school chapel to the parish. It is reckoned to have been worth about \$12,000 then! Harry Watson and Derrick Hitchins have put their minds to how to mount it in the hall and Vestry has accepted their recommendations. It’s a very clever idea and it will provide security, be discretely located, and give an ‘old world feel’ when it is running. See if you can spot where it is, when it is up and going. Most of all, don’t panic if you see some little changes in the hall. It has vestry’s full support. A big Thank You will be sent to Trinity Grammar School.

(If the curiosity really gets to you, talk to Harry, Sandra or Derrick)

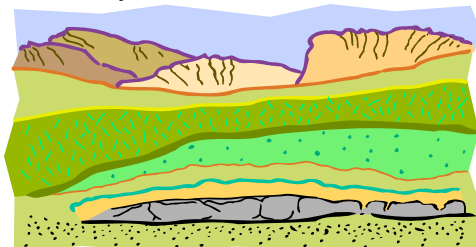
NEW LOGO FOR A NEW PARISH

When we were thinking about the name for the new parish entity Libby wrote:

“The new identity would be well expressed in a new logo to visually represent the parish, irrespective of what the name is. At present we put both logo’s on the pew sheets. A good logo represents the name as well as the vision.

I am dreaming about a design that incorporates the distinctive hills and the rivers somehow. The coming together of two rivers is referred to as a confluence and we are the coming together of two parishes.”

Hence, Libby has been working with Dianna Warrell, a retired Art Teacher, on designs for a logo and letterhead. The vestry got to see the first draft and was very excited. The logo reflects the image of the rolling hills characteristic to Eltham & Research in the background, the waterways of the area (the Yarra, the Plenty river, the Diamond creek) in the foreground and the unique gift of the Eltham Copper Butterfly. We will be putting it on display very shortly with a full description of the symbols for further input. As a vestry we feel it really does symbolically express who and where we are, as a new parish entity. When it’s displayed we will provide a full description of what all the symbols mean. Unfortunately we will have to wait until Libby and Dianna return from their Turkey trip. But your comments are welcome while they are away.



OUR PARISH FINANCES

As we move toward the end of our financial year and begin to look toward 2007/08 Vestry felt it helpful for the Parish to see where we are up to for this year and what we will need if we are to continue our ministry and grow.

We have been very blessed this year with the Bequests and parishioners commitments, however at this point vestry has agreed to set the bequest monies aside for interest accumulation for future ministries. Although we will have funds from the sale of Montmorency this will be most likely be taken up with the re-development project. We need to keep in mind that we have committed ourselves to an Assistant Priest part time and would want this to continue into the new year. Please prayerfully consider the budget issues.

Sandra Brown-Holt Wardens

FINANCES & BEST PRACTICE

The Vestry will shortly be reviewing the financial systems used at St Margaret’s to ensure that they meet the requirements that are outlined in the Faithfulness in Service and The Code of Good Practice – This will include the policies for the counting, recording and banking of monies, bookkeeping procedures and other financial policies. (Wardens)

Notes re Financial Report 1 October 2006 to 31 July 2007
for St Margaret's Eltham

- There is a deficit of \$12,030 which is mainly attributable to the Relocation / Amalgamation Costs for Montmorency total (including the Memorial Garden Expenses) which will be reimbursed from the sale of the St Faith's site.
- Bequests totalling \$404,737 have been received which have resulted in higher interest being received in this financial year – a further distribution is due in August.
- St Faith's ADF Funds \$11,807 have been transferred to St Margaret's ADF Funds
- It is anticipated the residual funds from the sale of the Montmorency site (after the GST / Estate Agent costs /

reimb
urse
ment
of
reloc
ation
costs)
will
be
divide
d in
the
follow
ing
propo
rtions
20%
Dioce
se
10%
Paris
h
Missi
on in
the
Dioce
se
and
70%
for
the
redev
elop
ment
of the
Eltha
m
site.

St Margaret's Anglican Church

Parish of Eltham, Research & Montmorency
79-81 Pitt Street Eltham Vic 3095

Income & Expenditure
1 October 2006 to 31 July 2007

Income	
Offertory	\$75,362
Donations Specified	\$1,806
Donations General	\$1,653
Grants - Ministry	\$1,167
Grants - Cook Book & MultiFaith Service	\$1,475
Investment & Interest Income	\$3,651
Property Income	\$70,154
Religious Fee Income (Weddings & Funerals)	\$2,610
Fund Raising & Parish Activities	\$8,369
Insurance Premiums	\$1,355
Donations received - Missions	\$3,679
Total Income	\$171,281
Expenditure	
Employment - Clergy	\$67,664
Employment - Administration	\$15,105
Diocesan Assessments	\$22,113
Ministry & Worship Costs	\$2,847
Administrative Expenses	\$23,284
Occupancy Costs	\$24,372
Property Maintenance Costs	\$13,270
Interest Paid	\$198
Donations Paid to Missions	\$4,353
Loan Repayments	\$2,376
Memorial Garden	\$7,727
Total Expenditure	\$183,311
Operating Surplus / (Deficit)	(\$12,030)